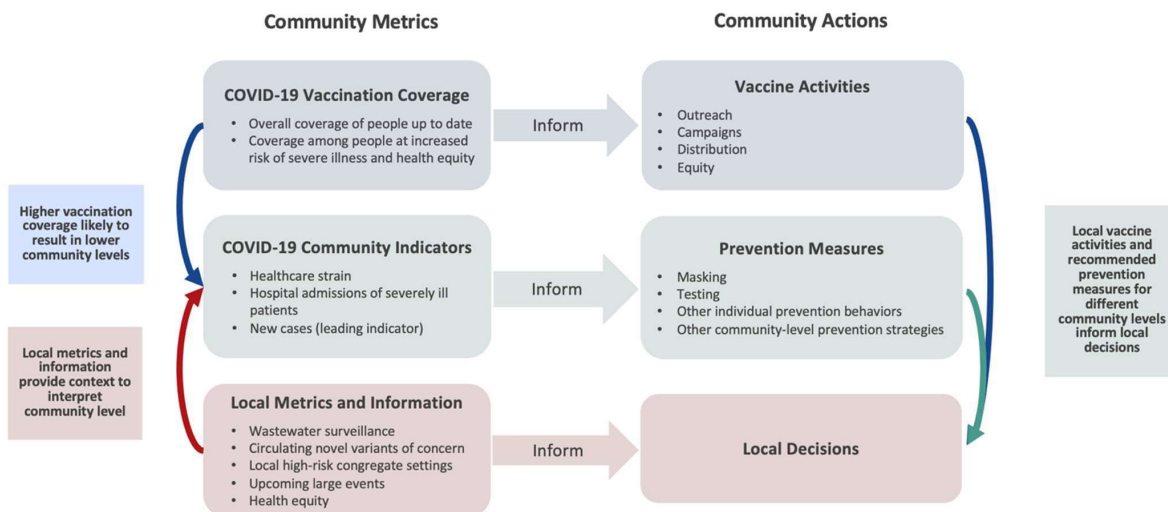


## Metrics for Determining Level of COVID Safety Protocols Required, which includes Mask Requirements (if allowable):

If notified by Health Personnel that cases are rising, the Moscow School District will continue to work closely with our local medical community and Idaho District 2 Public Health to monitor several metrics to be used to inform decisions for MSD 281. The decision would include determining when COVID Safety Protocols such as transitioning between prevention strategies that include requiring masks (If allowable) and conditions during which they can be a personal choice.

Consistent with the CDC's framework for local decisions on preventions strategies (Fig. 1), it is important that the school district will consider several factors and use a variety of metrics to guide future decisions. The metrics are intended to provide a more comprehensive prediction of risks for both individual transmission risks and the local risks in which communities, hospitals and schools are collectively invested. Metrics will e gathered following the notification mentioned above in the first paragraph.



**Figure 1:** Framework for monitoring of Covid risk and prevention of community transmission.

As portrayed in Fig. 1, community metrics combine information on community indicators (new cases and healthcare strain) within a context of vaccination coverage and local metrics. We will continue to monitor the publicly available community indicators that provide an assessment of community risk (Fig. 2) and couple that with data that we continue to gather within the school district:

- Daily Overall Absences
  - We will have a 7-day rolling average, maintaining a percentage less than or equal to 12.5%.
- In addition to the information available publicly or within the school, we will consider vetted information that we receive on local conditions to guide recommendations that influence decisions about out school district's COVID prevention policy:
 

<ul style="list-style-type: none"> <li>○ Hospital Capacity</li> <li>○ Community outbreaks</li> <li>○ Outbreak in schools</li> <li>○ Absences (Student &amp; Staff)</li> <li>○ Grouping or location of outbreaks</li> </ul>	<ul style="list-style-type: none"> <li>○ Upcoming risk factors</li> <li>○ City or State directives</li> <li>○ Medical staff input</li> <li>○ Regional public health input</li> <li>○ Other circumstances at the moment</li> </ul>
--	---

**Note:** With a history of CDC being able to accurately determine when a surge will impact our local area, the Health and Safety Committee may request the Board of Trustees to either highly recommend or require people entering school facilities to take extra precautionary measures, including but not limited to mask wearing. These measures

**1.1.**

would be in place until we return to the LOW Community levels. Families will be provided as much advanced notification of protocol changes as feasible.